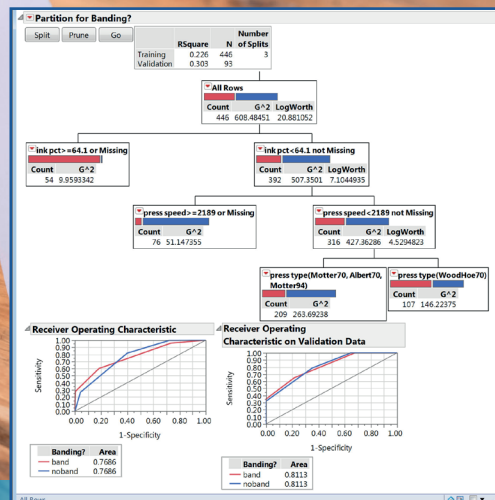


"Fantastic trainers,  
fantastic course.  
I was amazed at how  
quickly I was using JMP®  
to solve real and difficult problems"

PETE, BLACKBELT



## Data Analysis & Statistical Problem Solving Using JMP®

## Module 2

**Suitable for:** Anyone wishing to learn the statistical tools and the underpinning theory. • Green Belts who have understood the DMAIC methodology and the non statistical tools and are now ready to move on to Black Belt.  
• People wanting to use JMP® to solve real problems in data rich environments.

### 3 Day Course

**Purpose:** To enable delegates to learn how to quickly solve real life variability problems using Visual Six Sigma with JMP statistical software.

**On this training delegates will learn:** • Practice using JMP® software • Cleanse and manipulate data ready for analysis • Use Visual Analysis to identify relationships • Understand statistical relationships  
• Understand types of variability & process capability • Conduct Measurement system analyses  
• Be introduced to statistical modelling.

## Course Content

### Getting started with JMP®

- data types, data tables, basic data explorations

### Data Collection & Manipulation

- Importing and exporting data
- Join, stack, subset, tabulate, sort
- Formulas, conditions, column properties
- Saving files, Using journals

### Basic Stats

- Means, medians, range, IQR
- Standard deviation, normality, SE mean, Box plot
- Confidence intervals, sample size, R Sq., P values

### Gauge Studies

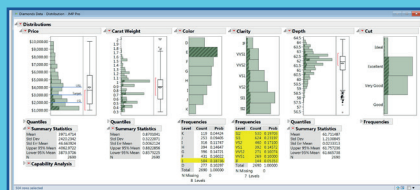
- Continuous Gauge Studies
- Attribute Agreement Analysis

### Visual Analysis

- Distributions, brushing, partitioning
- Run charts & data filters
- Graph Builder- pie, bar, overlay, box plots, grouping variables
- Contour maps, bubble plots
- Data Filters, Column Switcher

### Process Capability

- Common cause / Special cause
- Control Charts
- Capability -sigma and Cpk
- Short / Long Term sigma



### Statistical Relationships – Fit Y by X

- Hypothesis Tests, Anova,
- Simple regression
- Confidence of fit
- Prediction Intervals
- Residuals analysis
- Multiple regression
- Chi square
- Logistic regression

## Course Style

- Very hands on.
- Client specific data sets, scenarios, case studies as well as their own data.
- Delegates need their own PC & JMP® software throughout the course.